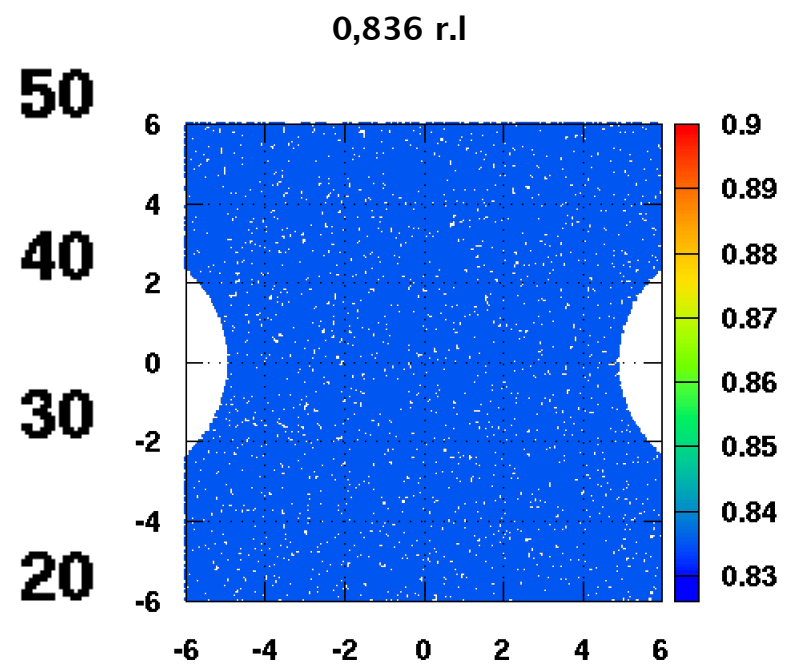
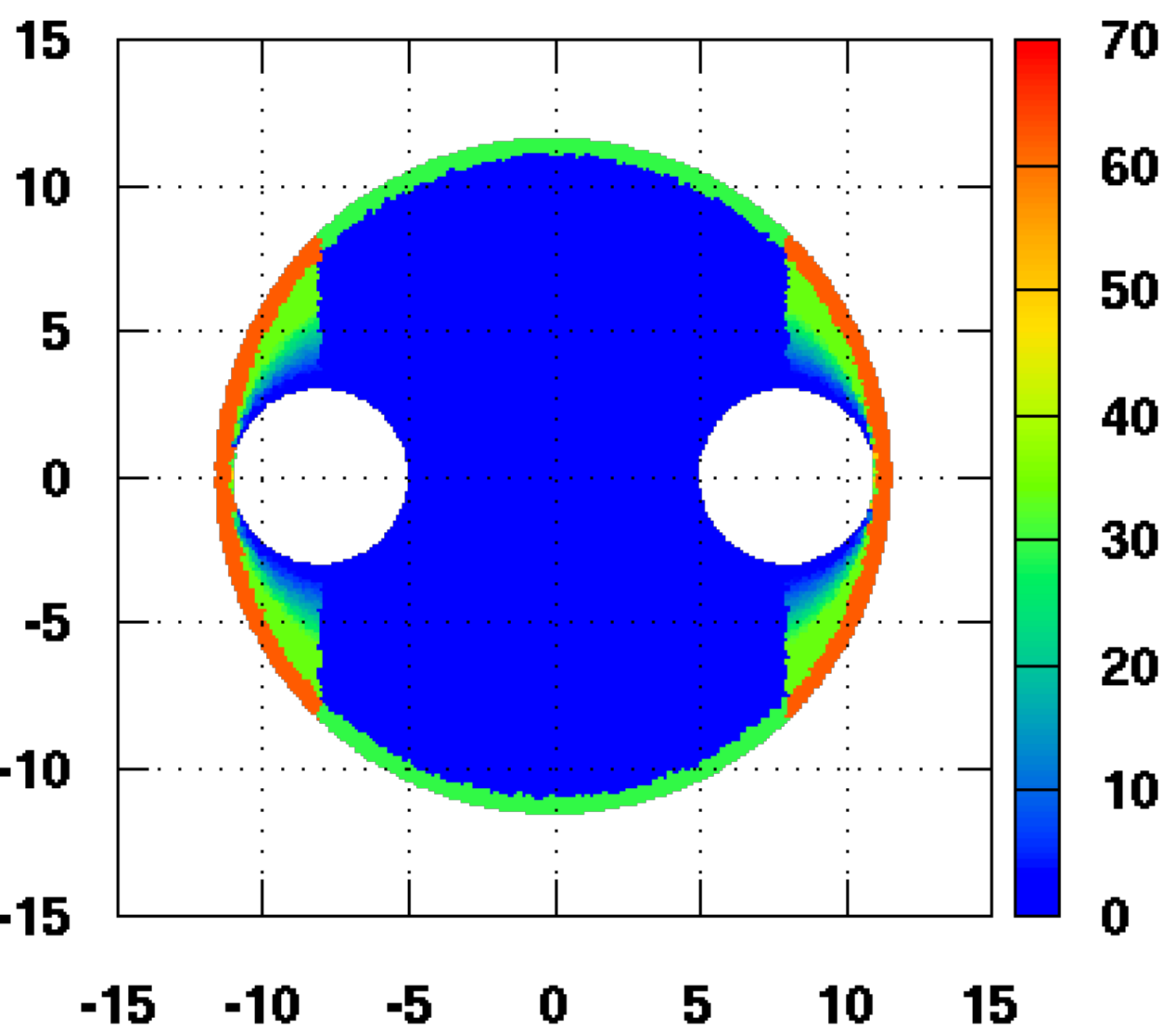
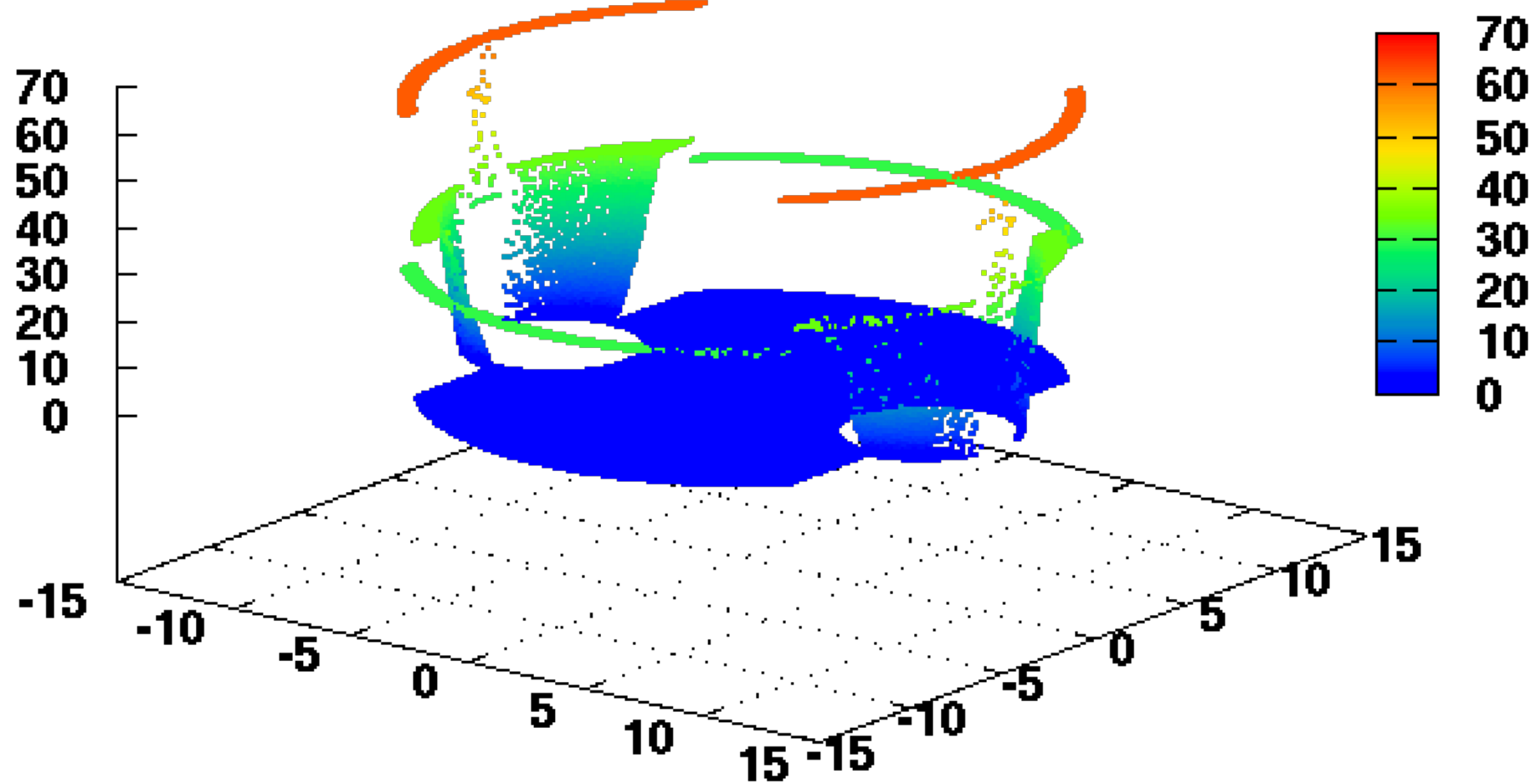
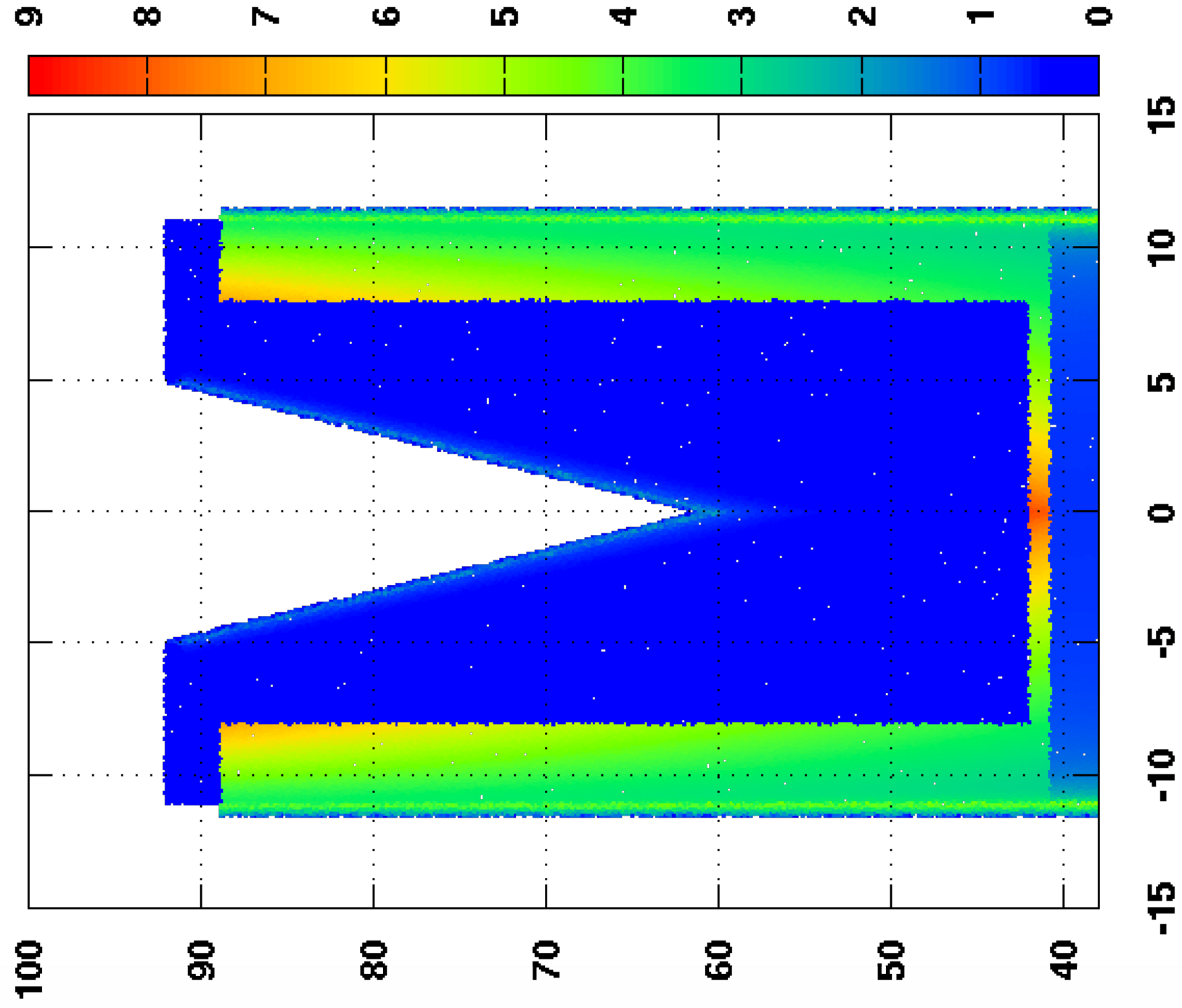




```
set size sq
set palette rgbformulae 22,13,-31
set view map
splot "/tmp/thickness" w p ps 0.5 pt 5 lt palette
```







if InputP='u->sph2' or 'g->sph2' and InputA='fix' with (DCInpX DCInpY DCInpZ)

call getProjPos works and we can get position information on a plane perpendicular to the incident direction (x-y coord is on this plane; position is uniform on this plane). The output contains projp line. So instead of using pos info in "h" line we may use projp info for material amount along the projection.

projp -18.280 33.372 34.600

h 1 1 -15.274 36.032 79.368 -0.5000000000 -0.7000000000 -0.509901951

if we use pos info in 'h' line we get ↓

